

Wiitmipn'iime



Animal people became stone



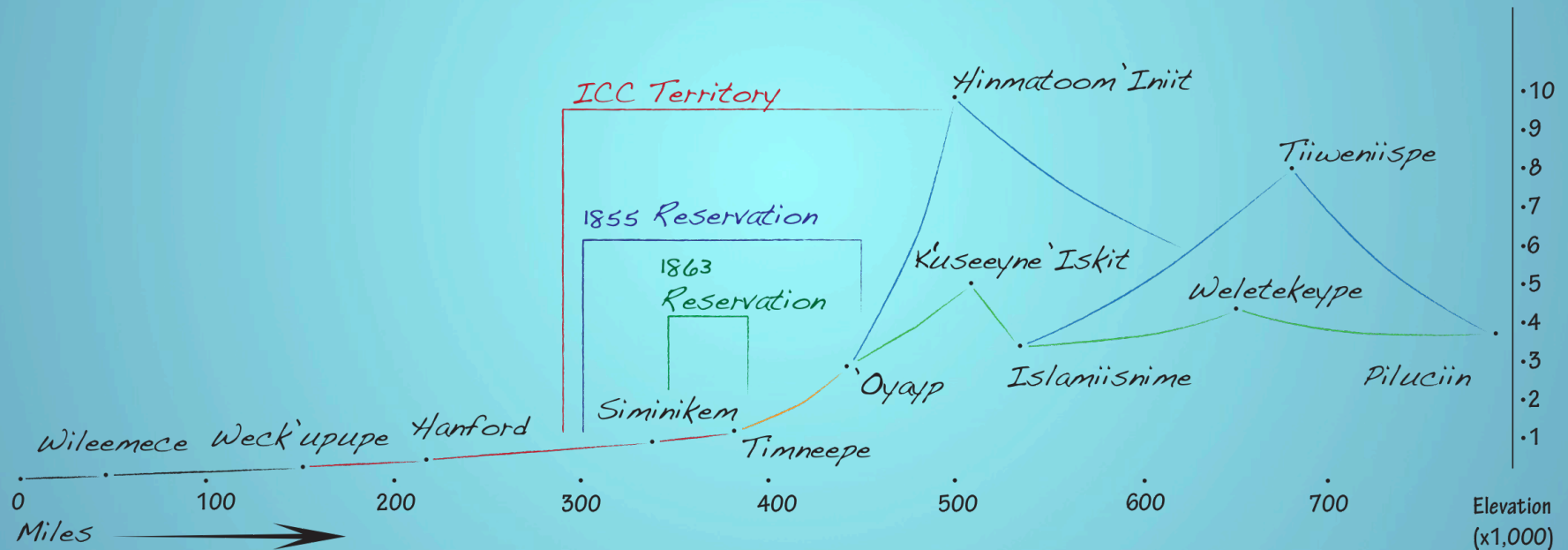
Haacwal Peleeyniin



- Young boy separated from family
- Cared for by Xaxaac
- Learned fishing & hunting areas and where to gather roots & berries
- Learned a vast trail network
- Returned to people with knowledge
- K'useeyne 'Iskit (Lolo Trail)

The Extent of Usual & Accustomed Areas

Silhouette of Northwest



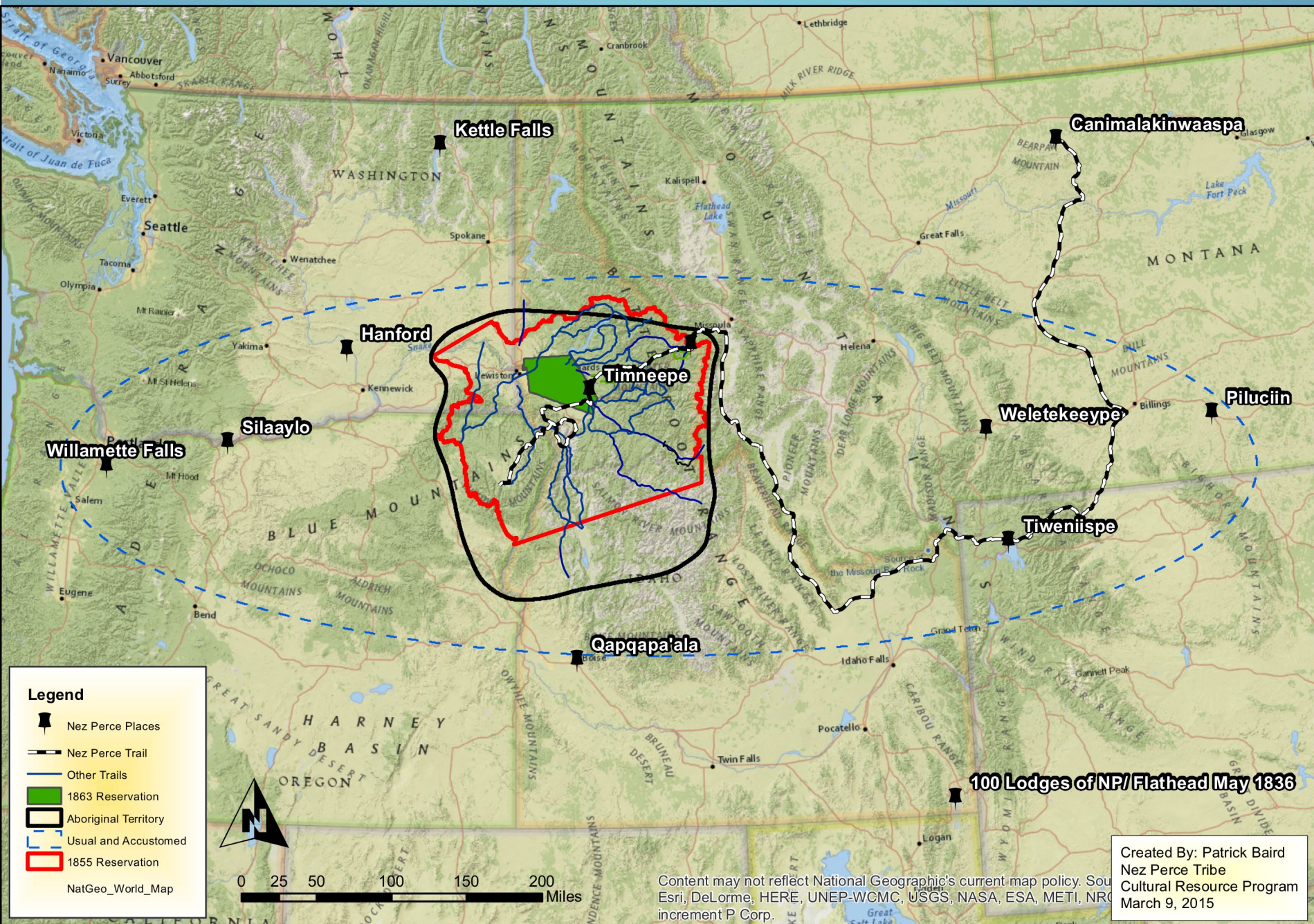


© 2009 Europa Technologies
© 2009 Tele Atlas
Image USDA Farm Service Agency
Image © 2009 TerraMetrics

45°40'46.76" N 118°07'06.55" W

© 2009 Google

Eye alt 486.61 mi



Core Value Statement

- Perpetuate a sensitive Relationship with the Land
- Ensure the survival of:
 - 1. Wetespeme (things from the land or “Resources”)
 - 2. Letiitelwit (people) along with the perceptions, values, life-ways and language that has ensured their survival.
 - 3. Pathways and points of access to those resources

Core Value Statement (cont.)

- We utilize the experience and guidance of 'anaqoonma (those animals and people who came before us) Our work is inspired by the Helekipu (countless future generations) and the traditional resilience of the 'anaqoonma who came before us. The heartbeat of our culture is the pulse of traditional Nez Perce life.
- All of this is conveyed from one generation to the next through our language: Kinepuutimpt.

Species list

- Chinook
- Grey Wolves
- Coho
- Pacific Lamprey
- Condors